



SGS MUSCOWPETUNG

ABORIGINAL CONSTRUCTION MONITORING

WEEKLY REPORT

SPREAD # 3

JANUARY 22ND TO JANUARY 28TH, 2018

Social and Cultural Features

Field Observation	# of occurrences	Description and Mitigation Measures	Mitigation Status	Further Action Required (Yes/No)
Traditional Use Area (hunting, fishing, gathering, trapping)	0			
Rock Formations (rocks of significance, tipi rings, etc.)	0			
Artifacts	0			
Bones	0			
Potential Gravesites	0			

Environmental Features

Field Observation	# of occurrences	Description and Mitigation Measures	Mitigation Status	Further Action Required (Yes/No)
Medicinal or Cultural Plants	0			
Aquatic Life	0			
Animal Observations or Burrows	0			
Bird Nests	0			
Trees (Red Willow)	0			
Wetlands	0			
Watercourse Crossing	1	South Saskatchewan River Crossing. Horizontal directional drilling	South Saskatchewan Crossing ongoing.	Ongoing

Additional Observations and Summary of Activities or Concerns

The horizontal directional drilling at the South Saskatchewan River is still an ongoing process. Mears group determined that the pipe was stuck at a pipe casing at the entry point. To resolve this issue, they welded a hammer head on the casing in which then they hammered out some of the casing. They cut off the hammer head and some of the sections of the casing they then took off the hammer head and repeated the same process. They then pulled on the pipe which they couldn't, so they had to weld a hammer head on the exit side onto the pipe. So, they managed to pull the pipe as far as they could until they got caught on casing again. As of yesterday, they were welding the hammer head onto the casing to try get rest of the casing out.

Golder Associates completed their work this week.

Installation valves is still ongoing this week they have finished welding onto the mainline. This week they also have put sand bags underneath the pipe to support the valve and pipe and they were packing in the soil over the pipe and valve as of yesterday.

Photos of Sites Visited & Topics Discussed This Week



Hammering out the casing



Just finished cutting out some of the casing

South Elevation

☼ 349°N (T) ● 51°20'54"N, 106°57'57"W ±16.4ft ▲ 1758ft



Building a pad at exit point so they can weld on the hammer head



Hammering out the casing



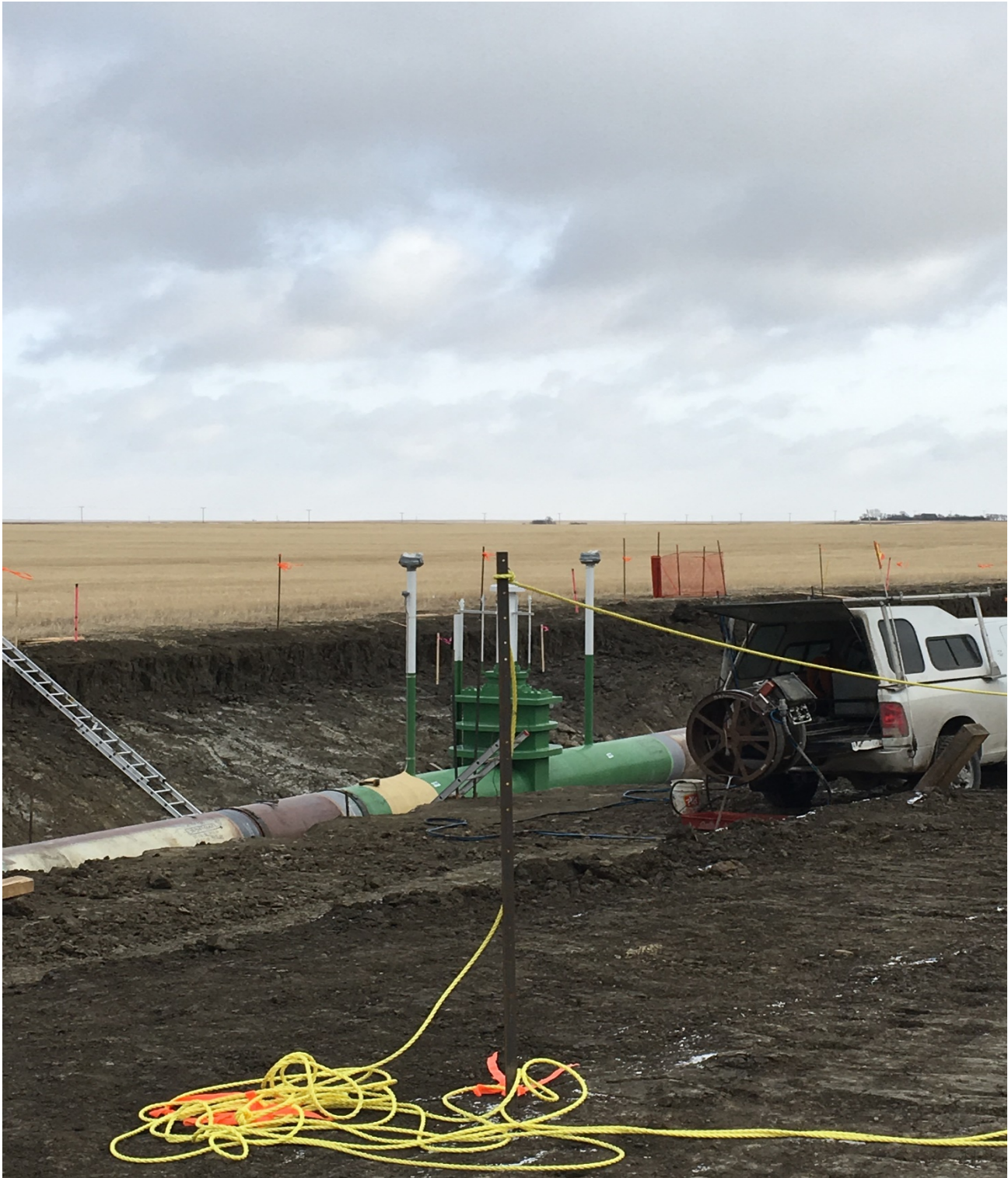
Hammering out of the casing



INSTALLING SAND BAGS FOR SUPPORT



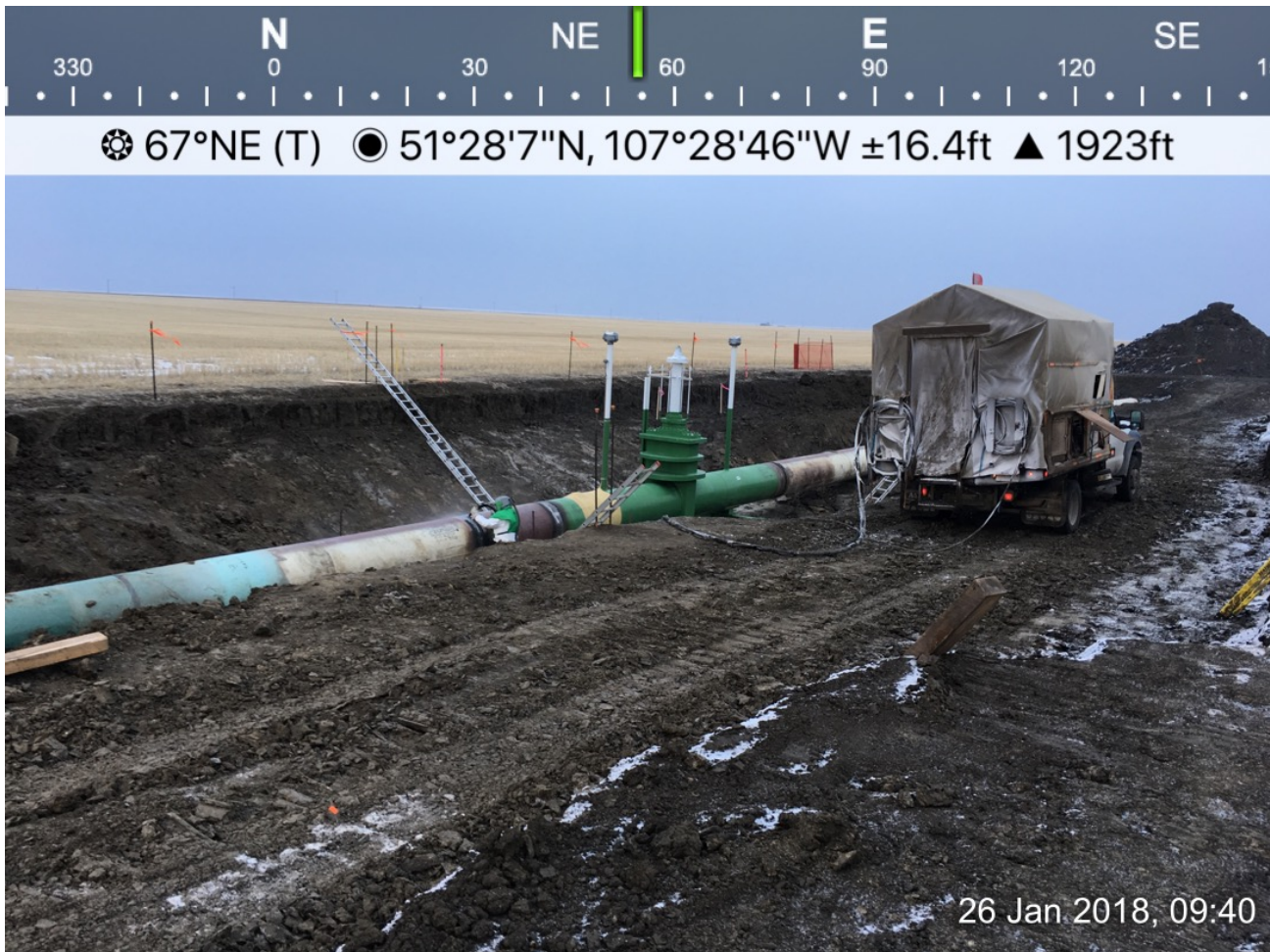
INSIDE VIEW OF THE HAMMER HEAD



SCANNING WELD ON VALVE



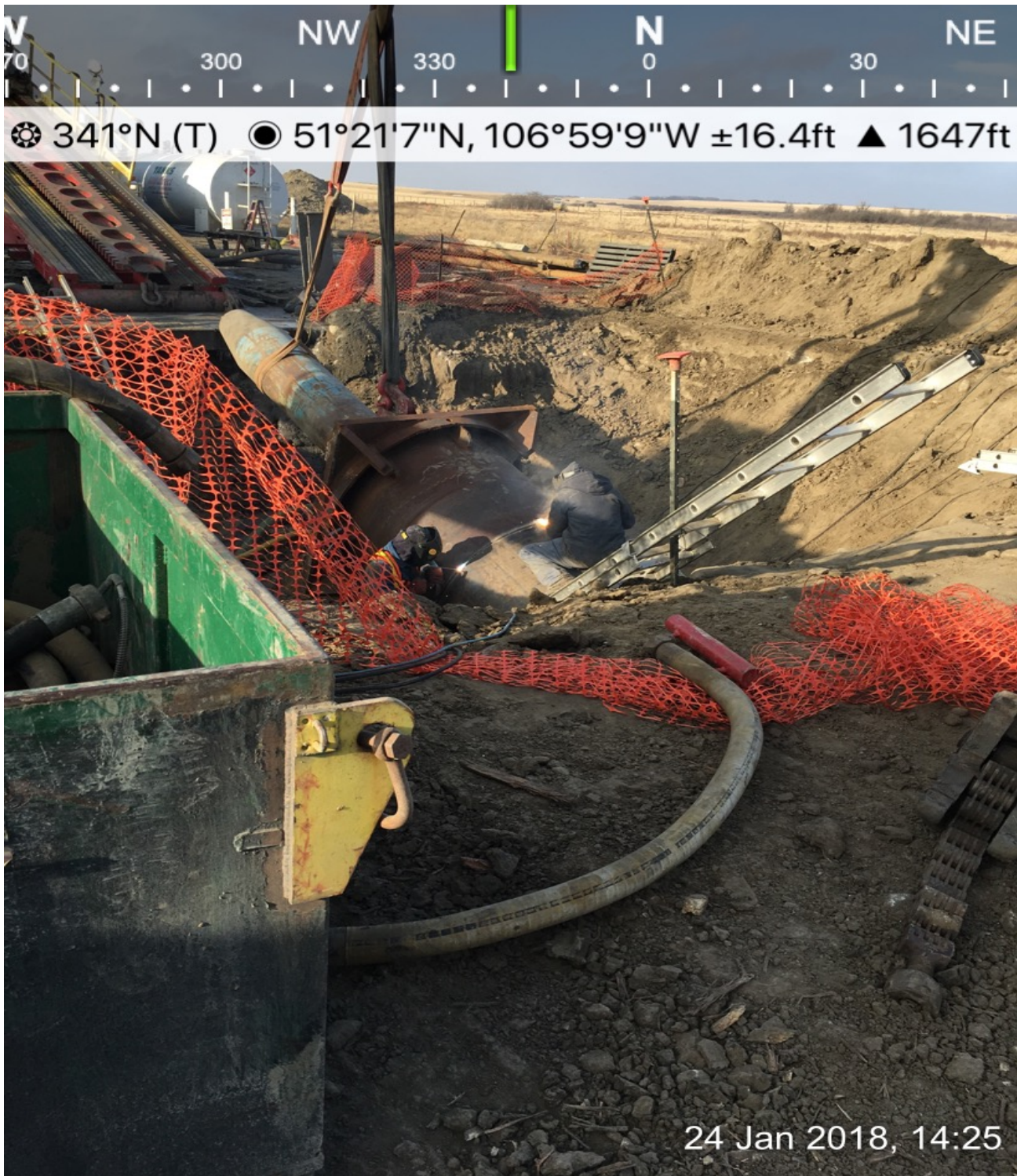
HAMMER HEAD



SAND BLASTING WELD



UNLOADING ROLLERS



WELDING ON HAMMER HEAD

Approvals

Prepared by



Gary Gopher
Senior Construction Monitor

January 28, 2018

Reviewed by



Joseph Roach
Project Manager

January 28, 2018

Approved by



Emmanuel Olotu, P.Eng.
Technical Manager, Geotechnical

January 30, 2018